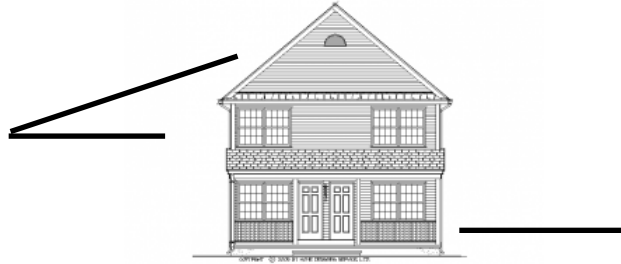
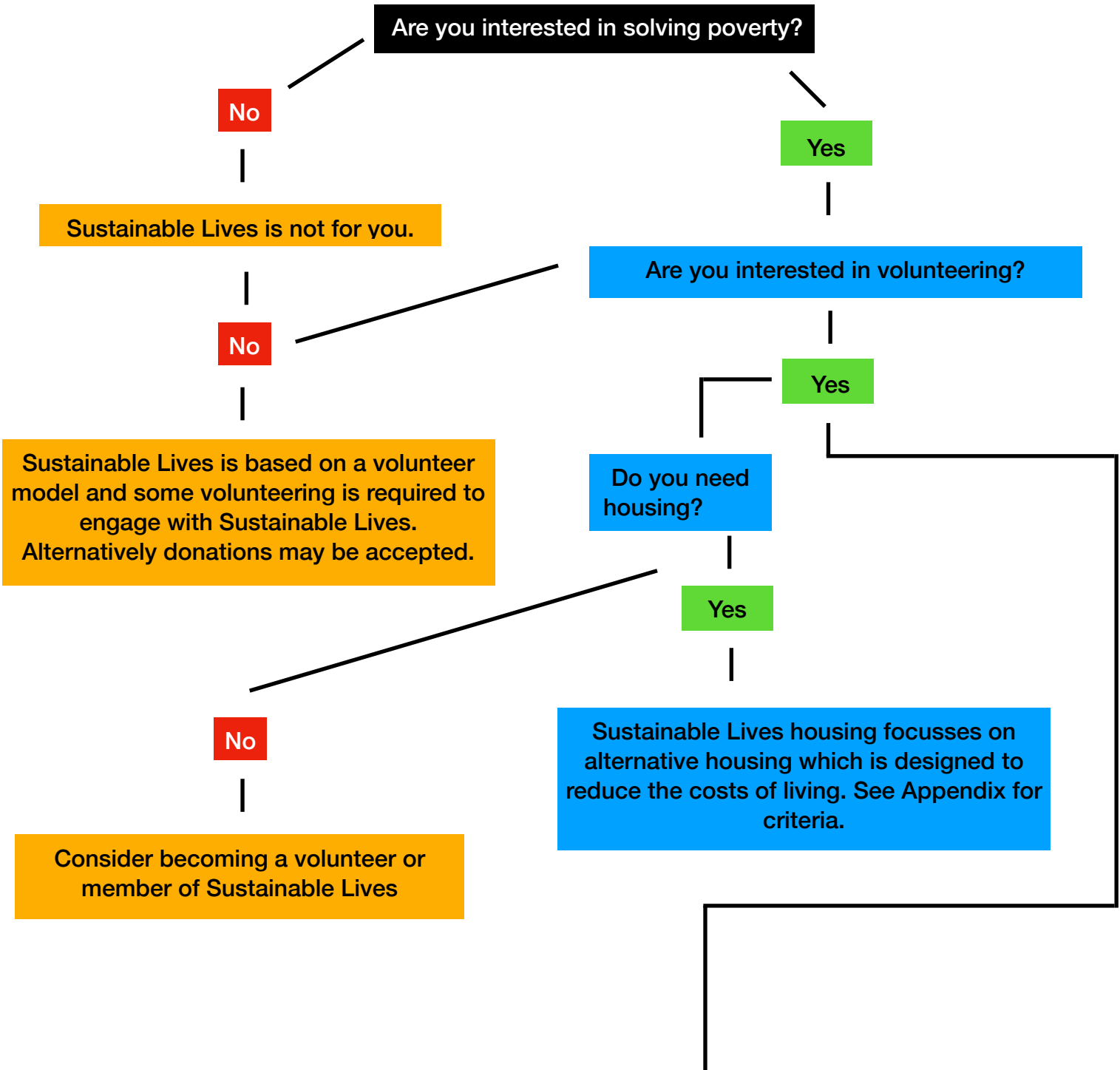


Basic Overview Based on Non Profit Model

Second story living and/or attic conversions.
300-400 USD Per Person (4-8 Person capacity)



First Floor for Member Programs or Businesses.
(\$2.00 / mo. / member)

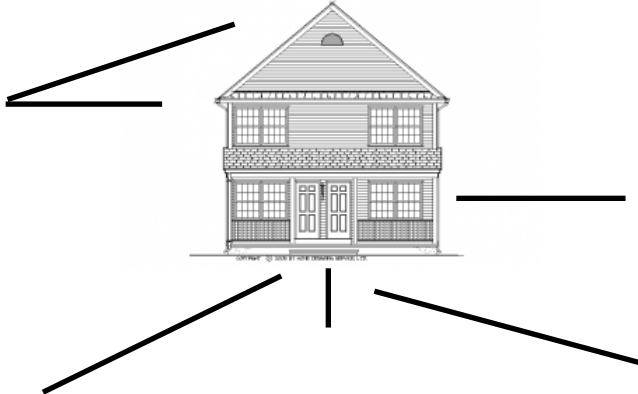


Become a member of Sustainable Lives. Members can utilize Sustainable Lives equipment or space which is available for the purpose of developing projects, programs or businesses. Members can also receive services provided by Sustainable Lives' volunteers. Members are also encouraged to volunteer.

Become a volunteer of Sustainable Lives. Sustainable Lives is meant to be a volunteer model which means that most programs will be run by volunteers.

Additional Means of Income for Sustainable Lives

Second story living and/or attic conversions. 300-400 USD Per Person (4-8 Person capacity)



First Floor for Member Programs or Businesses. (\$2.00 / mo. / member)

Fundraising

Donations

Grants

Social Services Integration

Each program must be fiscally solvent in its initial design. A team of individuals will suggest methodology of funding for each program: to ensure most efficient funding source and probability of program success.

As an individual Sustainable Lives House is filled, an attempt to develop additional houses will take place. This growth will also be dependent on the will and capability of those who are involved.

Appendix (This shows some of the criteria for engaging in Sustainable Lives programs.)

Projected cost of housing per person (300-400 USD all utilities included).

Are you a person who needs housing.

And

Are you a creative person working on art, music, writing or acting.

Or

A person who seeks to develop a program, project or business which can help you overcome a poverty situation or help others overcome a poverty situation.

And

You are a person who is willing to live in alternative housing models

Then

Sustainable Lives Housing might be for you.

Sustainable Lives members.

Are you a person who wants to help others overcome poverty through volunteerism.

Or

Are you a person who wants to improve your situation by creating a project program or business; develop skills

Sustainable Lives Members (\$2.00 / mo. / member)

Are you an individual who would like to work on art, music, writing or acting

Or

Are you an individual who would like to develop project, program, or business which is aimed at solving poverty problems or improve your own situation by developing skills to improve access to opportunities present in the community in which you live.

Then becoming a member of Sustainable Lives may be for you.